

BLACK OXIDE AND BLACK ZINC

STEEL & STAINLESS
METRIC & INCH

SAME-DAY
SHIPPING



KANEBRIDGE
CORPORATION



MACHINE SCREWS (STAINLESS)

- Phillips Flat 100°
- Phillips Flat 82°
- Phillips Flat Undercut
- Phillips Pan
- Phillips Truss
- Six-Lobe Pan

MACHINE SCREWS & SEMS (STEEL)

- Combination Pan
- Phillips Flat 100°
- Phillips Flat 82°
- Phillips Flat Undercut
- Phillips Fillister
- Phillips Hex Washer
- Phillips Oval
- Phillips Pan
- Phillips Round
- Phillips Truss
- Slotted Binding
- Slotted Fillister
- Slotted Hex
- Unslotted Hex
- Slotted Hex Washer
- Unslotted Hex Washer
- Slotted Oval
- Slotted Pan
- Slotted Round
- Slotted Truss
- Six-Lobe Flat
- Six-Lobe Flat Undercut
- Six-Lobe Pan
- Phillips Pan
 - External Tooth SEMS
 - Internal Tooth SEMS

TAPPING SCREWS—TYPE-A & AB (18-8 SS)

- Phillips Flat Type-A
- Phillips Pan Type-A
- Phillips Pan Type-AB
- Unslotted Hex Washer Type-AB
- Six-Lobe Pan Type-A
- Six-Lobe Pan Type-AB

TAPPING SCREWS—TYPES A & AB (STEEL)

- Phillips Flat Type-A
- Phillips Flat Undercut Type-A
- Phillips Flat Type-AB
- Phillips Flat Undercut Type-AB
- Phillips Pan Type-A
- Phillips Pan Type-AB
- Phillips Hex Washer Type-A
- Phillips Hex Washer Type-AB
- Phillips Oval Type-A
- Phillips Oval Type-AB
- Phillips Oval Type-A, #6 Head
- Phillips Oval Type-AB, #6 Head
- Phillips Round Washer Type-A
- Phillips Truss Type-A
- Phillips Truss Type-AB
- Six-Lobe Pan AB
- Slotted Indented Hex Washer
 - Type-A
 - Type-AB
 - Serrated Type-AB
- Square Pan Type-A
- Square Pan Type-AB
- Unslotted Indented Hex Washer
 - Type-A
 - Type-AB
 - Serrated Type-AB

TAPPING SCREWS—TYPE B (STEEL)

- Phillips Flat
- Phillips Flat Undercut
- Phillips Pan
- Phillips Truss
- Slotted Hex Washer
- Unslotted Hex Washer

HIGH-LOW SCREWS (STEEL)

- Phillips Flat
- Phillips Pan
- Six-Lobe Flat
- Six-Lobe Pan
- Unslotted Hex Washer

DRIVE SCREWS—TYPE-U (STEEL)

- Round Head

THREAD-CUTTING SCREWS (18-8 SS)

TYPE-F

- Phillips Flat Undercut

THREAD-CUTTING SCREWS (STEEL)

TYPE-F

- Phillips Flat
- Phillips Flat Undercut
- Phillips Pan
- Phillips Truss
- Slotted Hex Washer
- Unslotted Hex Washer

TYPE-1

- Phillips Pan
- Unslotted Hex Washer

TYPE-23

- Phillips Pan
- Slotted Hex Washer
- Unslotted Hex Washer

TYPE-25

- Phillips Flat
- Phillips Pan

THREAD-ROLLING SCREWS

GENERIC-ALTERNATIVES TO TAPTITE II* (STEEL)

- Phillips Flat
- Phillips Flat Undercut
- Phillips Pan
- Slotted Hex Washer
- Unslotted Hex Washer
- Six-Lobe Flat
- Six-Lobe Pan

GENERIC-ALTERNATIVES TO PLASTITE** (18-8 SS)

- Phillips Pan
- Six-Lobe Pan

GENERIC-ALTERNATIVES TO PLASTITE** (STEEL)

- Phillips Flat
- Phillips Flat Undercut
- Phillips Pan
- Unslotted Hex Washer
- Six-Lobe Flat
- Six-Lobe Flat Undercut
- Six-Lobe Pan

BOLTS, CAP & FLANGE SCREWS

- Carriage Bolts—Round Head, Square Neck
- Hex Cap Screws
- Serrated Hex Flange Screws

SELF-DRILLING SCREWS (18-8 & 410 SS)

- Unslotted Hex Washer (410)
- Phillips Pan (18-8)

SELF-DRILLING SCREWS (STEEL)

- Phillips Flat
- Phillips Oval
- Phillips Pan
- Phillips Modified Truss (Black Phosphate)
- Phillips Wafer w/ Machine Screw Thread
- Slotted Hex Washer
- Unslotted Hex Washer
- Square Recess Pan

NUTS (STEEL)

- Acorn Cap
- Hex Machine Screw
 - Standard Pattern
 - Small Pattern
- Square Machine Screw
- Finished Hex, Low Carbon
- Finished Hex, Grade-5
- Heavy Hex
- Hex Jam
- Serrated Hex Flange Lock
- K-Lock, Regular & Small Pattern
- Nylon Insert Stop
 - Light Hex, Standard Height
 - Light Hex, Thin Height
- Two-Way Reversible Stop
- Wing, Cold-Forged
- Wing, Stamped

NUTS (18-8 SS)

- Finished Hex
- Hex Machine Screw
- K-Lock
- Nylon Insert Stop, Full Height
- Nylon Insert Stop, Thin Height

WASHERS (18-8 SS)

- External Tooth Lock
- Regular Split Lock
- Flat Machine Screw

WASHERS (STEEL)

- Countersunk Finishing
- Flat Machine Screw
- Flat S.A.E. Low Carbon
- Flat U.S.S. Low Carbon
- Fender
- Regular Split Lock
- Tooth Lock
 - External
 - Internal
 - External-Internal Combo

WOODWORKING SCREWS

DEEP THREAD STYLE

- #8 Flat Square w/ Nibs & Type-17 Point
- #8 Flat Square-Phillips w/ Nibs & Type-17 Point
- Flat Phillips No Nibs
- Flat Phillips w/ Nibs
- Flat Square-Phillips
- Flat Square
- Flat Phillips w/ Nibs & Type-17 Point

WOODWORKING SCREWS (CONT)

DEEP THREAD STYLE

- Flat Phillips w/ No Nibs & Type-17 Point
- Flat Six-Lobe w/Nibs & Type-17 Point
- Flat Square-Phillips w/ Nibs & Type-17 Point
- Flat Square w/ Nibs & Type-17 Point
- Flat Square w/ No Nibs & Type-17 Point
- Large Round Washer Phillips w/Type-17 Point
- Pan Phillips
- Pan Square
- Pan Square-Phillips w/ Type-17 Point
- Pan Phillips w/ Type-17 Point
- Round Washer Six-Lobe w/ Type-17 Point
- Round Washer Square
- Round Washer Square-Phillips w/ Type-17 Pt
- Round Washer Square w/ Type-17 Point
- Truss Phillips
- #8 Truss Phillips w/#6 Head
- #8 Truss Square-Phillips w/ #6 Head
- Truss Phillips w/ Type-17 Point
- Face-Framing Screws, #7 Head w/ Type-17 Pt
 - Pan Phillips, Fine Thread
 - Pan Square, Coarse Thread
 - Pan Square, Fine Thread
- Hinge Screws
 - Flat Phillips
- Full-Body Wood Screws
 - Phillips Flat, Full Body

SELF-CLINCH STUDS

- Flush Head, 12 Rib Style

THUMB SCREWS

- No Shoulder
- With Shoulder

BLACK ZINC (STEEL)

MACHINE SCREWS

- Phillips Flat 82°
- Phillips Flat 100°
- Phillips Flat Undercut
- Phillips Oval
- Phillips Pan
- Phillips Round
- Phillips Truss
- Slotted Oval
- Slotted Pan
- Slotted Round
- Slotted Truss
- Six-Lobe Pan
- Phillips Pan External SEMS
- Phillips Pan Internal SEMS
- Six-Lobe Pan External SEMS

SELF-TAPPING SCREWS

TYPES A & AB

- Phillips Flat 82° Type-A
- Phillips Flat 82° Type-AB
- Phillips Flat Undercut Type-AB
- Phillips Hex Washer Type-AB
- Phillips Pan Type-AB
- Phillips Pan Type-A
- Phillips Oval Type-AB
- Phillips Oval Undercut Type-AB
- Phillips Round Washer Type-A
- Phillips Truss Type-A
- Phillips Truss Type-AB
- Hex Washer Combo Type-AB
- Hex Washer Slotted Type-AB
- Hex Washer Unslotted Type-AB
- Six-Lobe Pan Type-AB

BLACK ZINC (STEEL)

SELF-TAPPING SCREWS (CONT)

TYPE-B

- Phillips Flat Undercut
- Phillips Pan

HIGH-LOW SCREWS

- Phillips Flat
- Phillips Pan
- Six-Lobe Flat
- Six-Lobe Pan

THREAD-CUTTING SCREWS

- Phillips Pan
 - Type-23
 - Type-25
 - Type-F
- Phillips Truss Type-F

THREAD-ROLLING SCREWS

GENERIC-ALTERNATIVES TO TAPTITE II**

- Phillips Pan

GENERIC-ALTERNATIVES TO PLASTITE**

- Phillips Pan
- Six-Lobe Pan

SELF-DRILLING SCREWS

- Phillips Flat, #2 point
- Phillips Flat Undercut
- Phillips Pan, #2 & #3 point
- Hex Washer Unslotted, #2 & #3 point
- Wafer Phillips w/ Machine Screw Threads, #3 point

BOLTS

- Round Head Carriage Bolt

NUTS

- Acorn Hex Cap Nut
- Hex Machine Screw Nut
 - Standard Pattern
 - Small Pattern
- Finished Hex Nut
- Hex Jam Nut
- K-Lock Nuts, Standard & Small Pattern
- Serrated Flange
- Nylon Insert Stop
 - Light Hex, Standard Height
 - Light Hex, Thin Height
- Tee-Nut, 3-Prong
- Two-Way Reversible

WASHERS

- External Tooth Lock
- Internal Tooth Lock
- Regular Split Lock
- Flat S.A.E.
- Flat U.S.S.
- Flat Machine Screw
- Countersunk Finishing

METRIC BLACK OXIDE

MACHINE SCREWS (STAINLESS)

- DIN 965 Phillips Flat
- DIN 7885A Phillips Pan

MACHINE SCREWS & SEMS (STEEL)

- DIN 965 Phillips Flat
- DIN 7885A Phillips Pan
- ISO 7045 Phillips Pan External-Tooth SEMs
- ISO 7045 Six-Lobe Pan

NUTS (STAINLESS)

- DIN 934, Class 50

NUTS (STEEL)

- DIN 985 Nylon Insert, Class 8

WASHERS (18-8 STAINLESS)

- DIN 125A Standard Flat
- DIN 127B Split Lock

WASHERS (STEEL)

- DIN 127B Split Lock
- DIN 6797A External Tooth L/W
- DIN 6797J Internal Tooth L/W



PLACE YOUR ORDER 24/7



You always have around-the-clock access to Kanebridge's price and inventory information via our e-commerce site FasNet™.

INSTANT INVENTORY AT YOUR SERVICE



Your Order is filled from our selection of over 43,000 Items. And our 99% fill-rate means you rarely have to wait for material that's out-of-stock.

PEACE OF MIND



Have confidence that your parts meet all product standards, assuring that your order is done right the first time, every time.

CUSTOM SHIPPING LABELS APPLIED TO EVERY CARTON



There is never any mention of Kanebridge on the labels or the paperwork that accompanies your customer's order. Your company is listed as the supplier.

CONFIRMATION IS EMAILED DIRECTLY TO YOU



This includes all relevant information so you can invoice your customer directly. Tracking data is posted, allowing you to immediately expedite the shipment with the carrier.

SAME-DAY SHIPPING



Your order will always ship same-day (unless set for a specific release date by you) from the Kanebridge facility located closest to your customer, saving you additional time and shipping costs.

SECONDARY PROCESSING OPTIONS



If additional work must be done to your parts before delivery to your customer (replating, patching, cross-drilling), we can direct your order to the appropriate secondary processor with your instructions.

DELIVERY TO YOUR CUSTOMER'S BUSINESS OR JOB SITE



Streamline your supply chain by having Kanebridge ship directly to your customer. We become your "silent partner", providing your customer with the fastest delivery possible.

BLACK OXIDE FINISH

Black oxide is a conversion coating (as opposed to an applied coating) because it results from a chemical reaction with the iron present in the metal fastener and forms an integral protective surface. It is a color of the base metal, which neither removes nor deposits metal; therefore it adds, at the most, 5 to 10 millionths of an inch to the fastener's dimensions. Likewise, it cannot chip, peel or rub off. Also, the item maintains 99% of its conductivity making black oxide a popular finish for electrical parts.

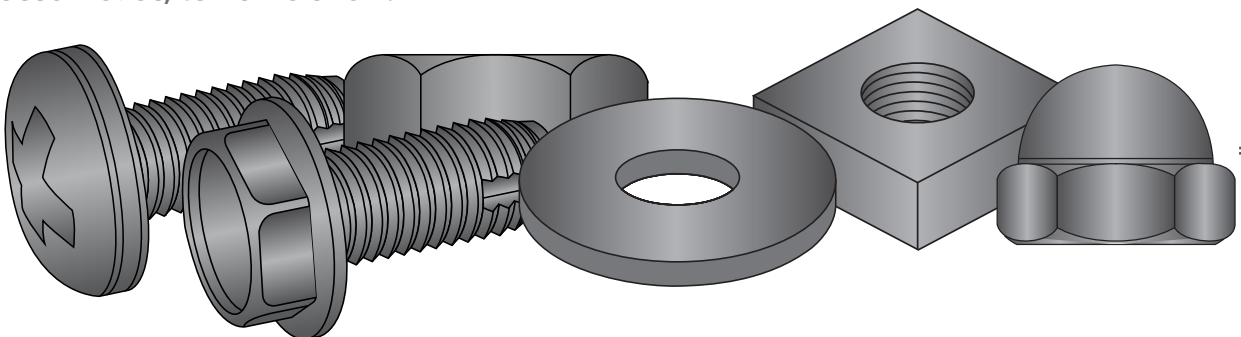
When a black oxide finish is specified, it is interpreted as "Black Oxide and Oil". Other supplementary coatings such as wax or lacquer may be ordered, but fasteners with those finishes are usually not available from a distributor's stock.

Typically, the oil after-finish is dry to the touch, which gives the part a lustrous appearance and improved lubricity without excessive residue. The color is a deep black rather than the grayish-black appearance of a black phosphate, and remains consistent at temperatures as high as 900°F. Black oxide also resists abrasions better than phosphate.

One of the most important advantages of black oxide is that there is almost no risk of hydrogen embrittlement because the process does not involve electroplating nor does it require an acid-activation. Case hardened parts need not be baked after receiving a black oxide finish.

Black oxide neither enhances nor detracts from a fastener's resistance to corrosion. The post-treatment oil application offers good indoor corrosion protection, but a zinc-plated part is more resistant to rust. However, parts with a black oxide finish will not suffer from white corrosion, which can occur over time with electro-plated parts. To avoid the risk of white corrosive particles (which can cause electrical shorts) many in the electronics industry opt for black oxide instead of zinc-plated fasteners.

The popularity of black oxide stainless fasteners is also growing. In addition to being used for decorative purposes, the finish reduces light glare and reflection, and makes the surface of the fastener smoother. The automotive aftermarket utilizes them in tail-light assemblies, luggage racks, grills and windshield wiper assemblies, to name a few.



THE KANEBRIDGE ADVANTAGE



Over 43,000 Items

Kanebridge is a master distributor with over 43,000 items in inventory, including over 11,000 stainless steel and 2,000 Military fasteners.



Order By Credit Card

We accept Visa, MasterCard, Discover and American Express for new sales orders and outstanding balances.



Same-Day Shipping

All orders placed by 5pm can ship the same day when using UPS. Emergency orders are ready within one hour. Airfreight orders placed by 7:45pm EDT (4:45pm PDT) can ship same day (based on stock availability in our California warehouse).



Free Certifications

Chemical & Physical certifications are available on all thru-hardened parts and all items made to military specifications. We also keep all certifications on file and properly archived. Access any certification anytime you need it at no charge.



Fastener Specification Guide

Kanebridge's newest 6th edition of its **Fastener Specification Guide** is available from stock in all 3 of our branches. This hard cover reference volume is the most comprehensive and up-to-date collection of fastener specifications Kanebridge has ever offered. The **Specification Guide** can also be accessed online at www.kanebridge.com.



No Fault Return Policy

We will accept returns of full carton quantities for any reason. There is no restocking charge on items returned within 30 days, without any alterations and accompanied with a return authorization. Material returned after 30 days will be subject to a 20% restocking charge; after 90 days returns may not be accepted. We prefer returns in our original boxes and lots must not be mingled. Thru-hardened or military grade fasteners will not be accepted unless returned in the original box(es).



99% Service Level

99% of the items listed in this catalog are available from stock every day from one of our three warehouses located coast to coast: New Jersey, Illinois and California.



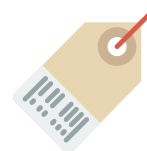
Traceability

Lot control is maintained on all items in our inventory.



Drop-Shipping

Kanebridge can ship orders directly to your customer with a packing list and shipping label that show you as the vendor. Combine with our Custom Label service for a simplified method of shipment.



Custom Labeling

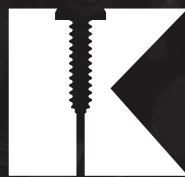
Streamline your receiving operations by letting Kanebridge affix custom labels to each box you order. Include any information you need; part number, part description, lot number and country of origin in alphanumeric and/or bar code formats.

THE KANEBRIDGE BACK OFFICE

Helping Deliver the Products Your Customers Need Today!

PRODUCTS AVAILABLE IN MULTIPLE FINISHES, DIRECT FROM OUR INVENTORY

- Bolts
- Carriage Bolts
- Cap Screws
- Drive Screws
- Electronic Hardware
- Flange Screws
- Lag Screws
- Machine Screws
- Military Hardware
- Metric Fasteners
- Nuts
- Pins
- Self-Drilling
- Self-Tapping
- Sems Screws
- Thread-Cutting
- Thread-Rolling
- Thumb Screws
- Washers
- Wood Screws



**KANEBRIDGE
CORPORATION**
New Jersey | Illinois | California

T: (800) 222-9221 sales@kanebridge.com

F: (201) 337-2301 www.kanebridge.com